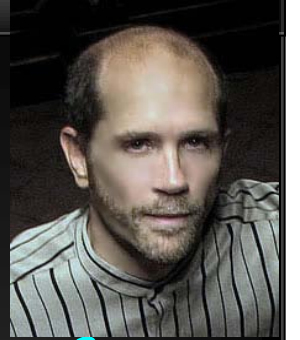


Seth Montfort's Supernatural Saturdays

Begin May 22



7pm - Watch the film *Apocalypse Island*

by Seth's future lecture recital collaborator, Archeologist **Jim Turner** who will call in from NY to answer questions on research not depicted in his film as well as discoveries made since the movie, *Apocalypse Island*, first aired on the History Channel this year. Less than two months later, the devastating 8.8-magnitude earthquake off the coast of Chile created a deadly tsunami that swamped the island, destroying much of the only village and killing more than a dozen people. Ancient Mayan manuscripts graphically depict destruction by flood at the end of the current World Age and we are left to wonder about their prophecies... Follow Turner's journey as he returns to where he first discovered an ancient Mayan monument at the only location in the Western Hemisphere to witness the final Total Solar Eclipse of the Mayan Great Cycle in 2012. - \$10



9pm - *Piano Concert or Séance?*

Seth Montfort performs "The American Indianists" – Can the Piano become a Medium for Ancient Native American Spirits & Star Beings to speak through? Lyrical & Virtuoso works by Farwell, Cadman, Troyer, Cowell, Sas, Villa-Lobos as well as his own *Temple To The Sun* – Lawrence Wilcox, moderator - \$10

Seth Montfort's book, *Aliens Made Me Play Gershwin*, available at these events, was called a "best seller" and Seth was described as "CHILD PRODIGY, BOY GENIUS, MAN MASTER... HOPING NOT TO RUN OUT OF PURE GENIUS HE MIGHT HAVE TO MAKE DO WITH MERE MORTAL GENIUS" by the Arts Council of Sonoma County. Is this merely because he is often "visited" by Aliens, Star Beings & the Ghosts of Composers? Find out at Guerneville's former mortuary, now

The Composers' House

16375 4th Street at Mill, Guerneville, 95446
www.sfconcerto.org (707) 604-7606